

# Report an electrical emergency



[Contractors](#)   [Online services](#)   [Careers](#)   [Contact us](#)

---

[Power outages](#) ▼   [Connections](#) ▼   [Poles and wires](#) ▼   [Safety](#) ▼

[About us](#) ▼



# North West Transmission Developments

Once in  
a  
generation  
upgrade

The North West Transmission Developments project, being progressed by TasNetworks, is a once in a generation upgrade to the electricity transmission network. The upgrade is needed to support Tasmania's ambition to become a world-leading renewable energy provider and double clean energy production by 2040.

---

Australia's energy sector is changing. The North West Transmission Developments, together with [Marinus Link](#), will support Australia's transition to a clean energy future. The upgrade will provide much-needed capacity to support new and existing renewable energy developments in the region, enabling Tasmania to use its energy system more efficiently.

---

## About the North West Transmission Developments





240km of new and upgraded overhead transmission lines and other energy infrastructure



Together with Marinus Link, creating 1400 local jobs



Contributing to \$1.4 billion in economic stimulus for Tasmania



72% of the project will upgrade existing infrastructure. The remaining 28% will be new build

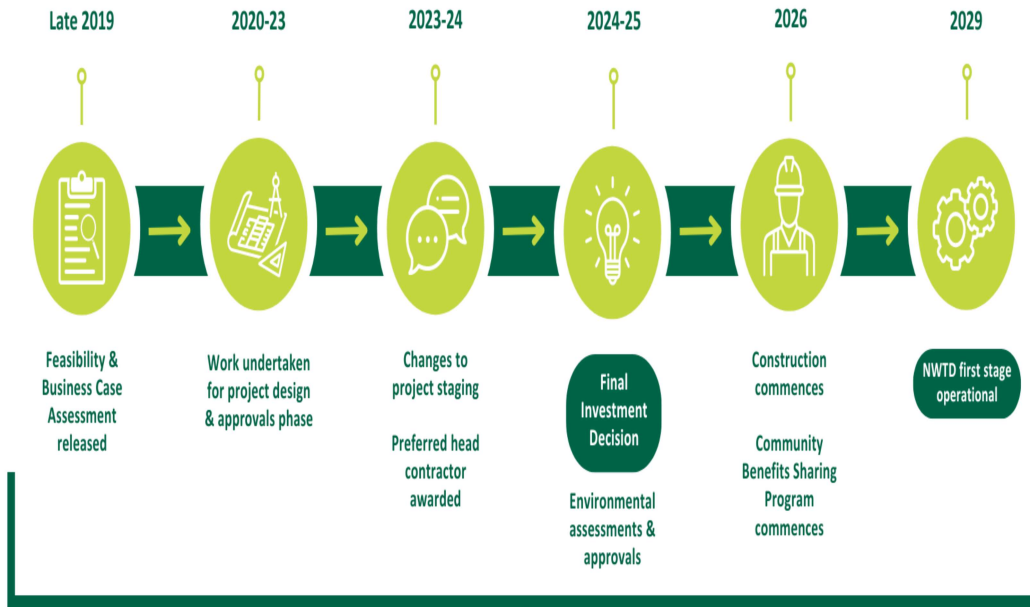


Unlocking a pipeline of future renewable energy projects in the region



Supporting Australia's transition to a clean energy future

## Project timeline



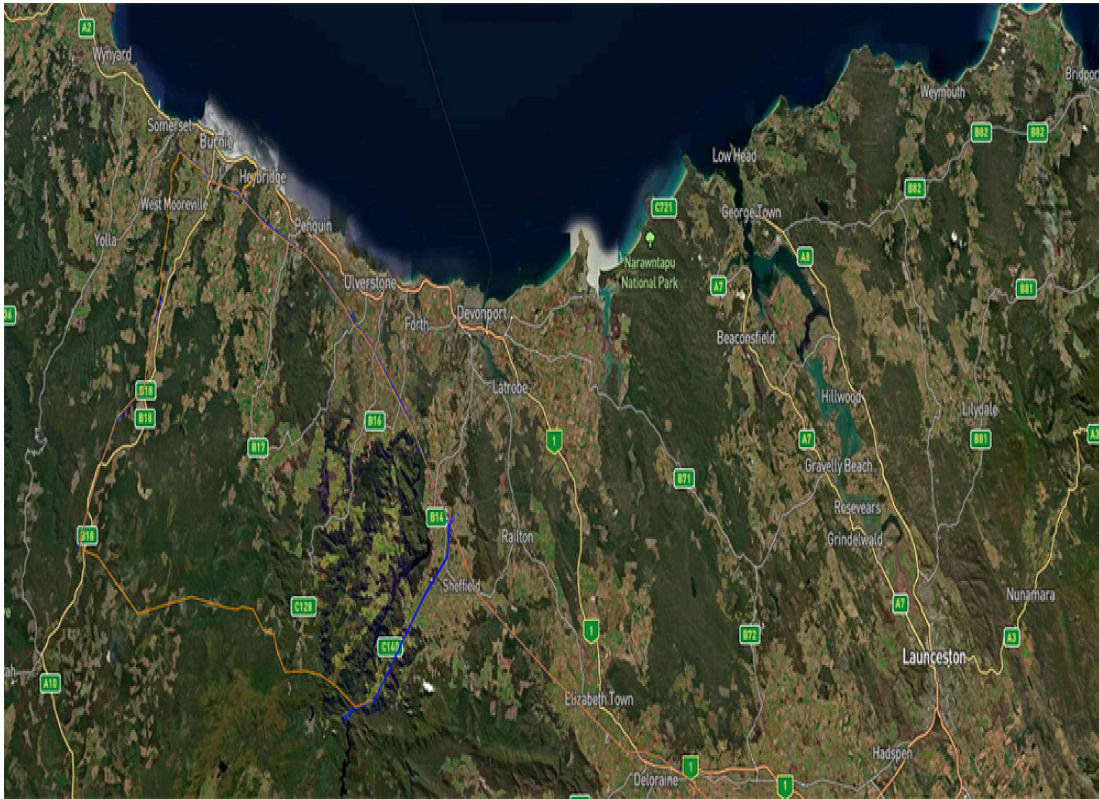
Community and landholder engagement throughout the entire lifespan of the project

## NWTD transmission corridor



---

# NWTD interactive map



---

## Subscribe for project updates

For monthly project updates, engagement opportunities, and to be notified when the NWTD Development Application (DA) and Environmental Impact Statement (EIS) are on public exhibition, please sign up to our newsletter mailing list.

[Subscribe to NWTD monthly e-newsletter](#)

---

## Latest news

Find out what's been happening

## Landholders Engagement Resource library

Information for landholders

Find out how we've been engaging with the community

Fact sheets, reports, maps and webinars



## Community Procurement and Planning investment and suppliers and approvals

Find out about our community investment initiatives in NW Tasmania

Find out how your Tasmanian business can service the NWTD project

Development Application and Environmental Approvals

## Staverton to Hampshire Hills

Find out more about the route for the Staverton to Hampshire Hills section

[Customer Charter](#) [Online services](#)

[Our power supply  
guarantee](#) [Sitemap](#)

[Disclaimer](#)

[Media](#) [Privacy policy](#)

[Contact us](#)

© 2024 Tasmanian Networks Pty Ltd ABN 24 167 357 299

---

TasNetworks acknowledges the palawa (Tasmanian Aboriginal community) as the original owners and custodians of lutruwita (Tasmania). We pay respect to Elders past and present and all Aboriginal and Torres Strait Islander peoples here with us today.